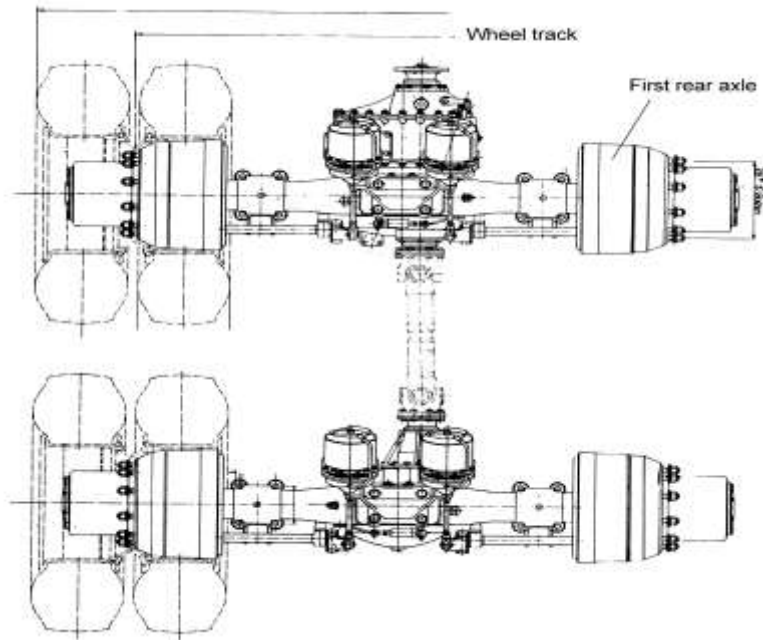


4.0 HC16驱动桥/HC16 Drive Axles

序号/ No.	名 称 / Designation		页 码 /Page No.
4,01	双后驱动桥总成/Rear Tandem Drive Axles	-----	1
4,02	中桥驱动装置/1st Rear Axle Drive	-----	2
4,03	后桥驱动装置/Rear Axle Drive	-----	9
4,04	中桥桥壳/1st Rear Axle Housing	-----	13
4,05	后桥桥壳/ Rear Axle Housing	-----	15
4,06	三段式铸造后桥轮毂及制动器/Hub and Brake of Driving Axle	-----	17
4,07	三段式铸造后桥轮毂及制动器 (ABS)/Hub and Brake of Driving Axle (ABS)	-----	22

4.01 双后驱动桥总成/Rear Tandem Drive Axles Ass.



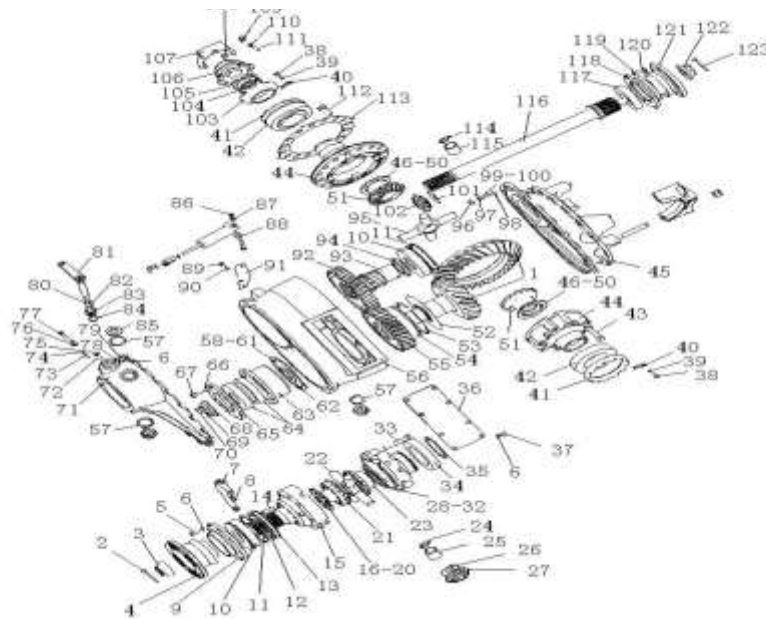
4.01 双后驱动桥总成/Rear Tandem Drive Axles Ass.

序号 No.	零部件图号 Part No.	名称	Part Name	数量 Qty	备注 Remark
0	AH71131400982	三段式铸造双桥(QT) (4.42)	Rear tandem drive axles ass	1	
0,1	AH71131541981	三段式铸造中桥(QT) (4.42)	1st rear axle ass.(i=4.42)	1	
0,2	AH71131551982	三段式铸造后桥(QT) (4.42)	Rear axle ass.(i=4.42)	1	

主要配置/Main Configurations

1		型号:HC16	Mode:HC16		
2		铸造桥壳	Casting axle housing		
3		主减速比4.42	Reduction ratio 4.42		
4		输入法兰Φ180mm	Input flange Φ180mm		
5		轮距1850mm	Wheel track 1850mm		

4.02 中桥驱动装置 (i=4.42, XS φ180, 铸造桥用) /Drive of 1st Rear Axle

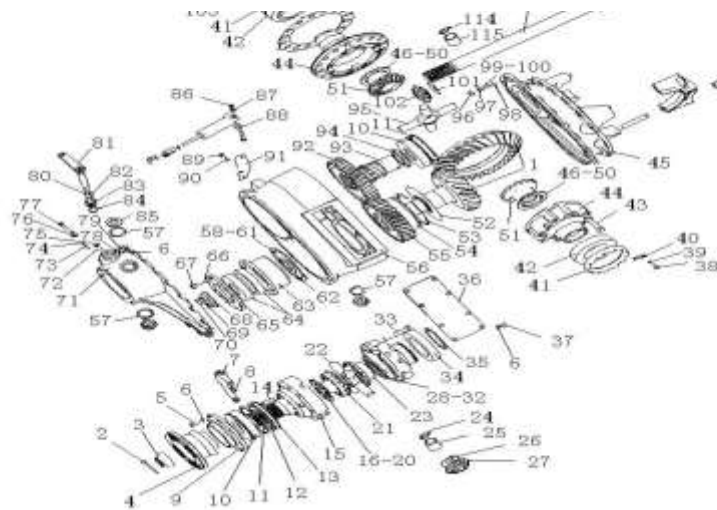


4.02 中桥驱动装置 (i=4.42, XS φ 180, 铸造桥用) / Drive of 1st Rear Axle

序号 No.	零部件图号 Part No.	名称	Part Name	数量 Qty	备注 Remark
1	WG9114320251	锥齿轮副28/17	Pinion and crown wheel	1	
2	Q5005055	开口销	Split pin	1	
3	WG79000320013	凸缘螺母	Nut	1	
4	WG9231320014	XS φ 180凸缘总成	Flange ass.	1	
5	Q150B1025	六角头螺栓	Screw	8	
6	Q40310	弹簧垫圈	Spring washer	34	
7	WG9014320053	拨叉	Fork	1	
8	WG1800 320077	拨叉活动块	Block	2	
9	WG9014320175	端盖	Cover	1	
10	190003311543	有止动槽的向心球轴承63	#N/A	2	
11	Q433130	轴用压扁钢丝挡圈	Snap ring	2	
12	WG9014320061	轴间差速器壳垫片	Shim	1	
13	WG288 320105	差速锁锁环	Ring	1	
14	WG288 320106	差速锁销	Pin	10	
15	WG9231320271	差速器壳	Diff. housing	1	
16	WG9231320091	半轴齿轮(前)垫片	Shim	1	
17	WG9231320092	半轴齿轮(前)垫片	Shim	1	
18	WG9231320093	半轴齿轮(前)垫片	Shim	1	
19	WG9231320094	半轴齿轮(前)垫片	Shim	1	
20	WG9231320095	半轴齿轮(前)垫片	Shim	1	

4.02 中桥驱动装置 (i=4.42, XS φ 180, 铸造桥用) / Drive of 1st Rear Axle

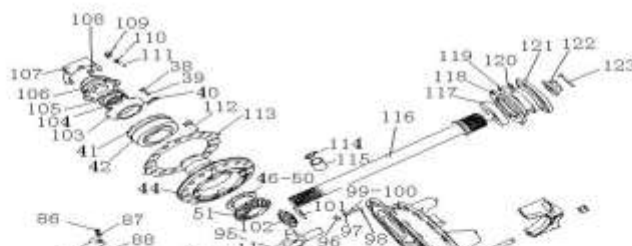


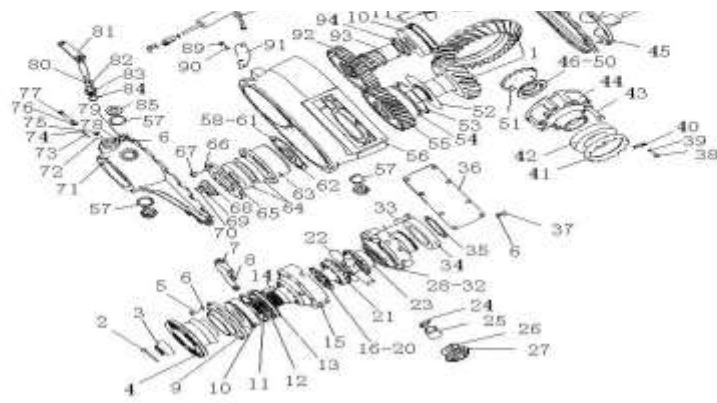


4.02 中桥驱动装置 (i=4.42, XS φ180, 铸造桥用) /Drive of 1st Rear Axle

序号	零部件图号	名称	Part Name	数量	备注
No.	Part No.			Qty	Remark
21	WG9231320225	前半轴齿轮	Gear	1	
22	AZ9231320223	十字轴	Spider	1	
23	WG9231320226	后半轴齿轮	Gear	1	
24	WG9231320222	衬套挡圈	Snap ring	4	
25	WG9231320221	衬套	Sleeve	4	
26	WG9231320224	行星齿轮垫片	Gasket	4	
27	WG9231320227	行星齿轮	Planetary Gear	4	
28	WG9231320096	半轴齿轮(后)垫片	Shim	1	
29	WG9231320097	半轴齿轮(后)垫片	Shim	1	
30	WG9231320098	半轴齿轮(后)垫片	Shim	1	
31	WG9231320099	半轴齿轮(后)垫片	Shim	1	
32	WG9231320100	半轴齿轮(后)垫片	Shim	1	
33	Q151C1280TF2	六角头螺栓	Screw	12	
34	190003310239	带防尘盖深沟球轴承6015	Bearing	1	
35	190003933580	轴用弹性挡圈	Snap ring	1	
36	WG9014320118	接油板总成	Plate	1	
37	Q150B1020Q	六角头螺栓	Screw	8	
38	Q150B0816	六角头螺栓	Screw	2	
39	Q40308	弹簧垫圈	Spring washer	2	
40	WG79000320027	止动片	Retainer sheet	2	

4.02 中桥驱动装置 (i=4.42, XS φ180, 铸造桥用) /Drive of 1st Rear Axle

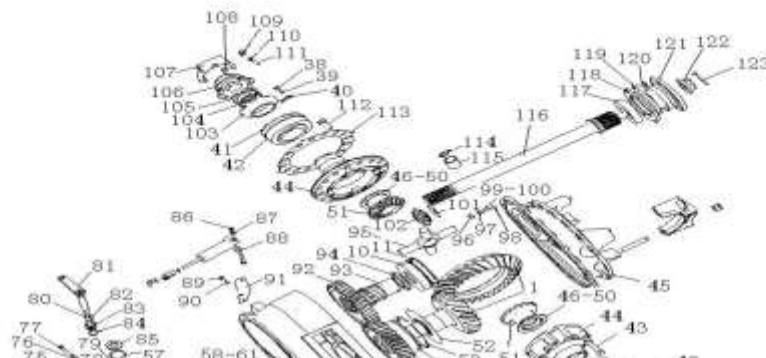


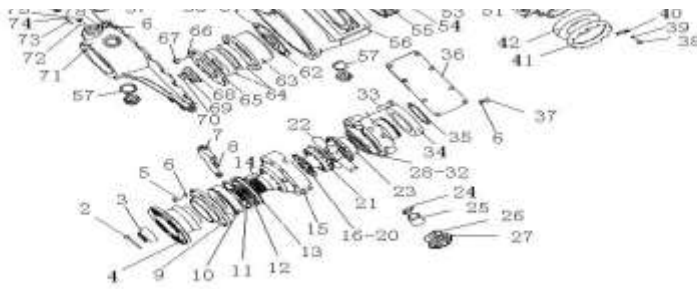


4.02 中桥驱动装置 (i=4.42, XS φ180, 铸造桥用) /Drive of 1st Rear Axle

序号 No.	零部件图号 Part No.	名称	Part Name	数量 Qty	备注 Remark
41	WG3809320159	差速器轴承调整螺母	Nut	2	
42	190003326148	圆锥滚子轴承32216GB/T	Bearing	2	
43	WG9231320169	六角头螺栓	Screw	8	
44	WG9231320272	差速器壳	Diff. housing	1	
45	WG9014320120	主减速器壳(中桥)	Reductor housing of 1st rear	1	
46	WG9231320154	调整垫片	Adjusting shim	1	
47	WG9231320155	调整垫片	Adjusting shim	1	
48	WG9231320156	调整垫片	Adjusting shim	1	
49	WG9231320157	调整垫片	Adjusting shim	1	
50	WG9231320158	调整垫片	Adjusting shim	1	
51	WG9231320151	半轴齿轮	Gear	2	
52	WG9014320174	挡油片	Plate	1	
53	WG9014320256	钢丝档圈	Snap ring	1	
54	WG9014320257	滚柱轴承	Roller bearing	1	
55	WG9114320001	从动圆柱齿轮z=27	Driven gear	1	
56	AZ9231320259	过桥箱	Housing	1	
57	Q72336	密封垫圈	Sealing washer	1	
58	WG9014320131	调整垫片	Adjusting shim	1	
59	WG9014320132	调整垫片	Adjusting shim	1	
60	WG9014320133	调整垫片	Adjusting shim	1	

4.02 中桥驱动装置 (i=4.42, XS φ180, 铸造桥用) /Drive of 1st Rear Axle

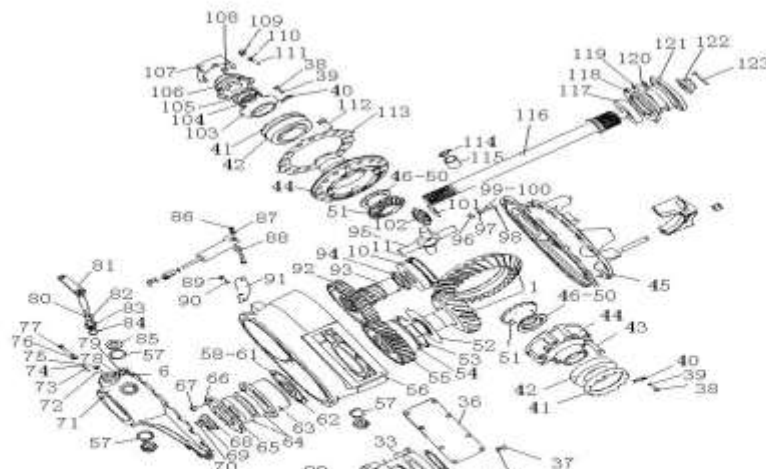


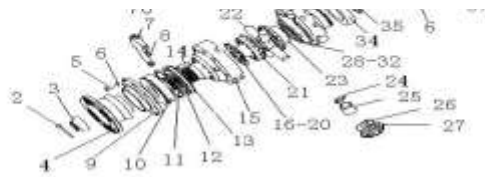


4.02 中桥驱动装置 (i=4.42, XS φ 180, 铸造桥用) /Drive of 1st Rear Axle

序号	零部件图号	名称	Part Name	数量	备注
No.	Part No.			Qty	Remark
61	WG9014320134	调整垫片	Adjusting shim	1	
62	WG9014320140	隔圈	Ring	1	
63	WG9014320129	轴承座	Bearing seat	1	
64	190003326333	圆锥滚子轴承31311GB/T	Bearing	2	
65	WG9014320128	轴承外环压板	Plate	1	
66	190003813543	双头螺栓	Screw	8	
67	Q33210	2型全金属六角锁紧螺母	Nut	8	
68	WG780 320088	轴承压板	Plate	1	
69	WG9114320002	防松锁片--轴承压板紧固	Locking plate	1	
70	Q150B1430TF2	六角头螺栓	Screw	3	
71	AZ9231320264	过桥箱盖	Housing cover	1	
72	190003902070	开槽长园柱端紧定螺—螺	Bolt	1	
73	WG69000330008	销	Pin	1	
74	Q43705	轴用钢丝挡圈	Snap ring	1	
75	Q340B08	1型六角螺母	Nut	1	
76	Q340B10	六角螺母	Screw	1	
77	Q150B1050Q	六角头螺栓	Screw	1	
78	Q340B10	六角螺母	Screw	18	
79	Q1201028F3	双头螺柱	Screw	18	
80	190003933072	轴用弹性档圈	Circlip	1	

4.02 中桥驱动装置 (i=4.42, XS φ 180, 铸造桥用) /Drive of 1st Rear Axle

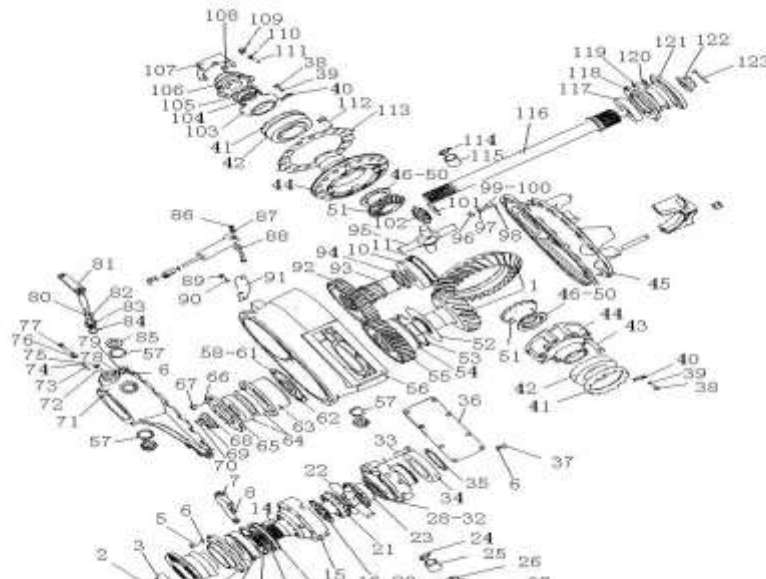


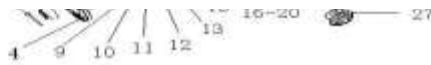


4.02 中桥驱动装置 (i=4.42, XS φ180, 铸造桥用) / Drive of 1st Rear Axle

序号 No.	零部件图号 Part No.	名称	Part Name	数量 Qty	备注 Remark
81	WG9014320076	差速锁摇臂总成	Rocker ass.	1	
82	WG288 730062	O型密封圈	O-ring	1	
83	WG2700 320037	衬套	Sleeve	1	
84	AZ9231320038	O形圈 (26502240GB3452)	"O" ring	1	
85	WG81500010163	螺塞	Screw plug	1	
86	Q33208	2型全金属六角锁紧螺母	Nut	1	
87	Q40108	平垫圈	Washer	1	
88	WG61000060072	隔套	Sleeve	1	
89	Q150B0818	六角头螺栓	Screw	2	
90	Q40308	弹簧垫圈	Spring washer	2	
91	WG9231320262	托架总成	Bracket	1	
92	WG9214320002	主动圆柱齿轮 z=35	Drive gear	1	
93	WG9231320135	空心轴	Hollow shaft	1	
94	WG9012250031	开槽园螺母	Nut	1	
95	AZ9231320150	十字轴	Spider	1	
96	Q340B12	I型六角头螺母	Nut	18	
97	Q40312	弹簧垫圈	Spring washer	18	
98	Q5211016	园柱销	Cylinder pin	4	
99	190003813628	双头螺柱	Screw	14	
100	Q1201225F3	双头螺栓	Screw	4	

4.02 中桥驱动装置 (i=4.42, XS φ180, 铸造桥用) / Drive of 1st Rear Axle

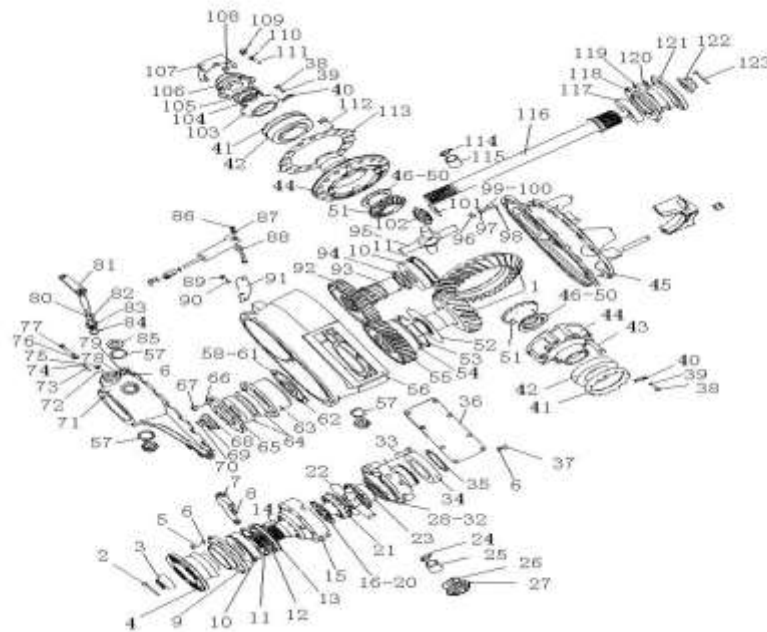




4.02 中桥驱动装置 (i=4.42, XS φ 180, 铸造桥用) /Drive of 1st Rear Axle

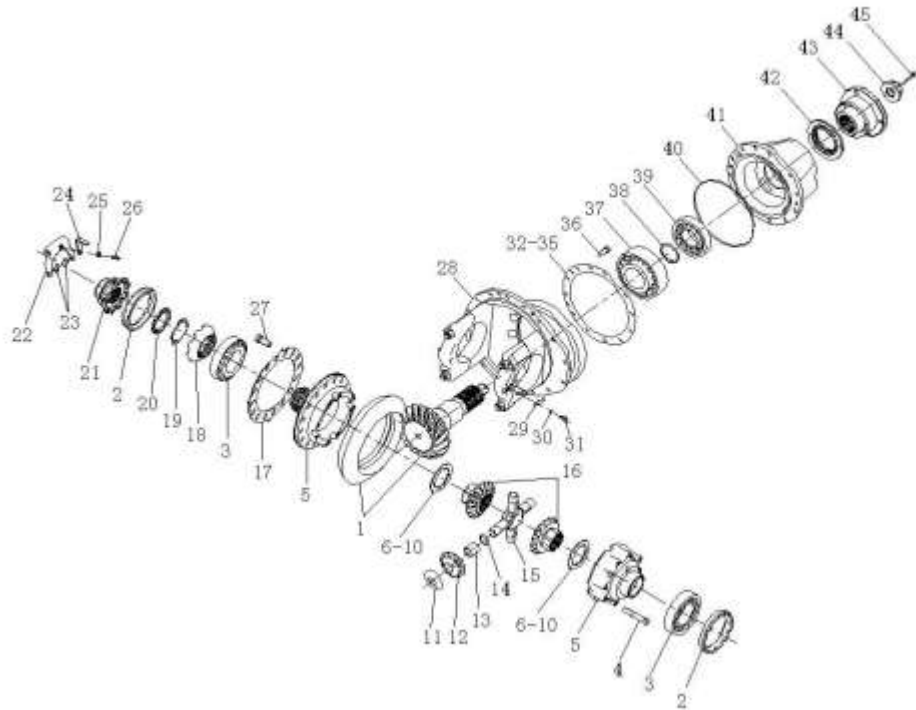
序号 No.	零部件图号 Part No.	名称	Part Name	数量 Qty	备注 Remark
101	WG9231320153	行星齿轮垫片	Gasket	4	
102	WG9231320152	行星齿轮	Planetary Gear	4	
103	WG3809320155	固定啮合套	Shifting dog	1	
104	WG3809320158	锁止垫片	Locking shim	1	
105	WG3809320157	园螺母	Nut	1	
106	WG3809320156	滑动啮合套	Sliding shifting sleeve	1	
107	WG9012320014	拨叉	Fork	1	
108	WG1800 320077	拨叉活动块	Block	2	
109	WG9231320023	弯板	Angle plate	1	
110	Q340B08	1型六角螺母	Nut	1	
111	Q2800825	开槽锥端紧定螺钉	Screw	1	
112	Q151B1635TF2	六角头螺栓	Screw	16	
113	WG9114320003	锁片-从动锥齿轮螺栓	Screw	1	
114	WG9231320160	衬套挡圈	Snap ring	4	
115	WG9231320159	衬套	Sleeve	4	
116	WG9231320261	贯通轴	Through shaft	1	
117	WG9231326212	双列圆锥滚子轴承	Roller bearing	1	
118	WG9231320141	轴承座	Bearing seat	1	
119	Q40310	弹簧垫圈	Spring washer	6	
120	Q150B1030	六角头螺栓	Screw	6	

4.02 中桥驱动装置 (i=4.42, XS φ 180, 铸造桥用) /Drive of 1st Rear Axle



No.	Part No.	名称	Part Name	Qty	Remark
1	AZ9231320911	锥齿轮付 33/26	Bevel gear & ring gear asse	1	
2	WG3809320159	差速器轴承调整螺母	Nut	2	
3	1,90003E+11	圆锥滚子轴承 32216 GB	Tapered roller bearing	2	
4	WG9231320169	六角头螺栓	Bolt	8	
5	WG9231320274	差速器壳	Differential housing	1	
6	WG9231320154	调整垫片	Shim	1	
7	WG9231320155	调整垫片	Shim	1	
8	WG9231320156	调整垫片	Shim	1	
9	WG9231320157	调整垫片	Shim	1	
10	WG9231320158	调整垫片	Shim	1	
11	WG9231320153	行星齿轮垫片	Shim	4	
12	WG9231320152	行星齿轮	Gear	4	
13	WG9231320159	衬套	Bushing	4	
14	WG9231320160	衬套挡圈	Ring	4	
15	AZ9231320150	十字轴	Cross-axis	1	
16	WG9231320151	半轴齿轮	Gear	2	
17	WG9114320003	锁片-从动锥齿轮螺栓	Shim	1	
18	WG3809320155	固定啮合套	Sleeve	1	
19	WG3809320158	锁止垫片	Shim	1	
20	WG3809320157	圆螺母	Nut	1	

4.03 后桥驱动装置 (i=4.42, XS φ165, 铸造桥用)/Drive of 2nd Rear Axle

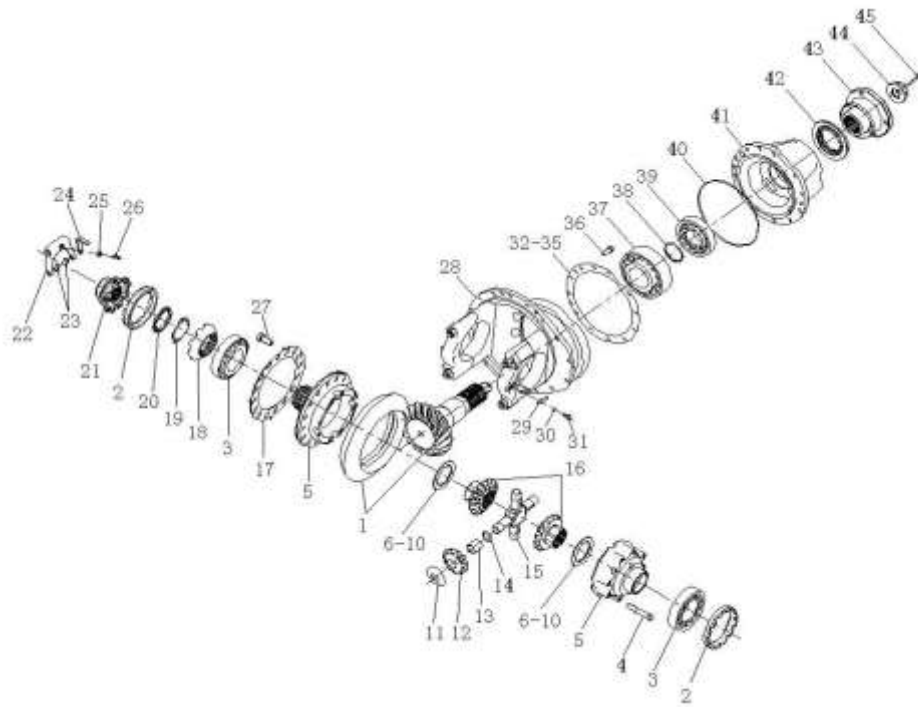


4.03 后桥驱动装置 (i=4.42, XS φ165, 铸造桥用)/Drive of 2nd Rear Axle

序号	零部件图号	名称	Part Name	数量	备注
No.	Part No.			Qty	Remark
21	WG3809320156	滑动啮合套	Sleeve	1	
22	WG9012320014	拨叉	Fork	1	

23	WG1800 320077	拨叉活动块	Block	2	
24	WG9231320023	弯板	Plate	1	
25	ZQ340B08	1型六角螺母M8	Hexagon nuts ,style 1	1	
26	Q2800825	开槽锥端紧定螺钉	Screw	1	
27	ZQ151B1632TF2	六角头螺栓M16*1.5	Hexagon head bolts	16	
28	1,99012E+11	主减速器壳	Final drive housing	1	
29	WG79000320027	止动片	Shim	2	
30	Q40308	弹簧垫圈	Spring washer	2	
31	ZQ150B0816	六角头螺栓M8	Hexagon head bolts	2	
32	WG9012320173	调整垫片(厚0.1)	Shim	1	
33	WG9012320174	调整垫片(厚0.15)	Shim	1	
34	WG9012320175	调整垫片(厚0.4)	Shim	1	
35	WG9012320176	调整垫片(厚1)	Shim	1	
36	Q150B1230TF2	六角头螺栓	Bolt	12	
37	1,90003E+11	圆锥滚子轴承 32316 GB	Tapered roller bearing	1	
38	AZ7121320001	调整垫片组	Shim	1	
39	1,90003E+11	圆锥滚子轴承 30312 GB	Tapered roller bearing	1	
40	WG9012320133	密封圈	Gasket	1	

4.03 后桥驱动装置 (i=4.42, XS φ165, 铸造桥用)/Drive of 2nd Rear Axle

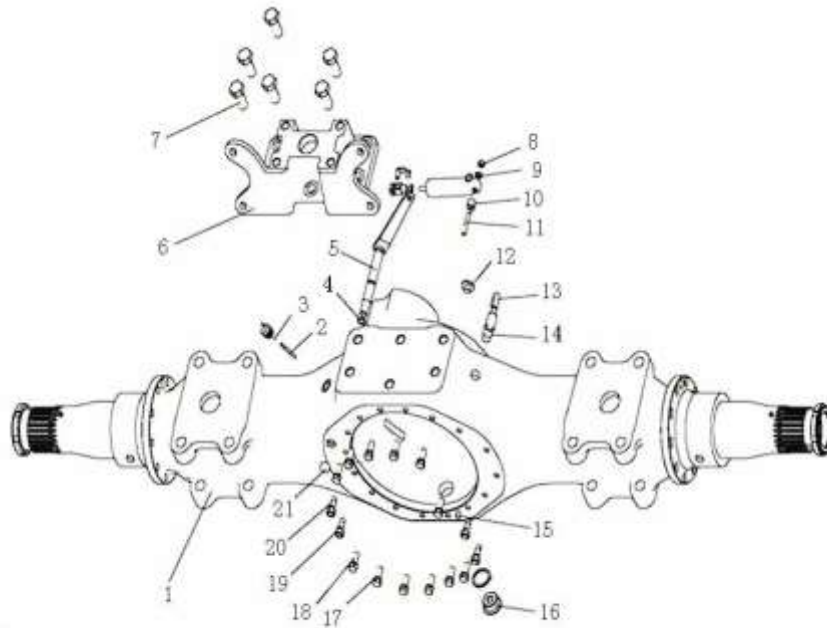


4.03 后桥驱动装置 (i=4.42, XS φ165, 铸造桥用)/Drive of 2nd Rear Axle

序号	零部件图号	名称	Part Name	数量	备注
No.	Part No.			Qty	Remark
41	WG9012320131	轴承座	Bearing cage	1	
42	WG9231320001	主减油封总成	Oil seal	1	
43	WG9231320130	XS φ165凸缘总成	XSφ165 Flange assembly	1	
44	WG79000320013	凸缘螺母	Nut	1	
45	Q5005055	开口销	Pin	1	

9	Q40108	平垫圈	Washer	1	
10	WG61000060084	间隔衬套	Bushing	1	
11	Q1200850F3	双头螺柱	Stud	1	
12	190003962021	锥螺纹内六角螺塞	Plug	1	
13	WG9231330106	橡胶软管	Hose	1	
14	WG9231330105	通气塞	Breather	1	
15	Q5211016	园柱销	Pin	1	
16	WG9981330024	磁性内六角锥螺塞总成	Plug	1	
17	Q40312	弹簧垫圈	Spring washer	16	
18	Q151C1230TF2	六角头螺栓	Bolt	12	
19	190003888457	自锁螺母	Nut	4	
20	190003810631	双头螺柱--M12-M12*1.5	Stud	4	

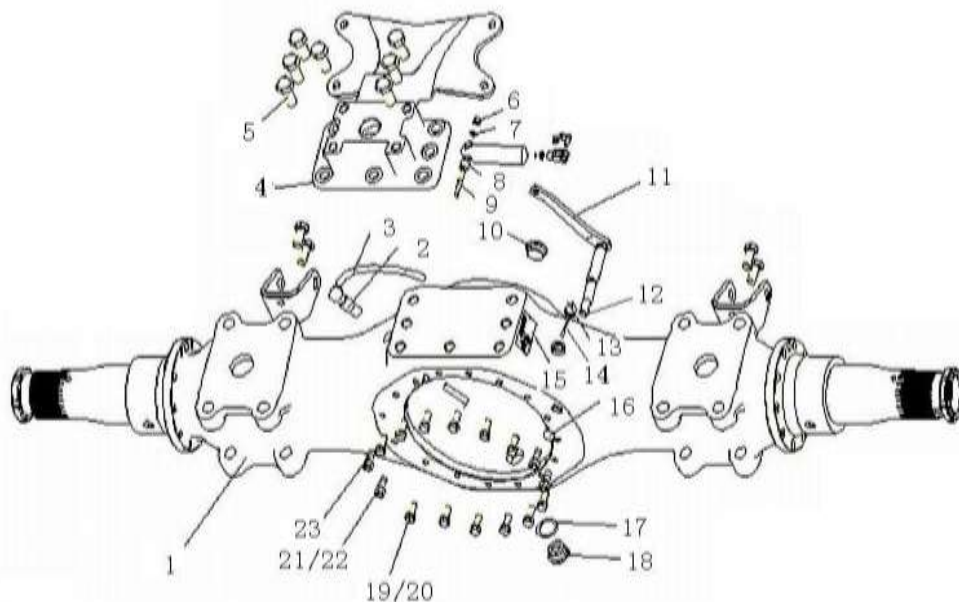
4.04 三段式铸造中桥壳(QT)(1850,断开式)/1st Rear Axle Housing



4.04 三段式铸造中桥壳(QT)(1850,断开式)/1st Rear Axle Housing

序号	零部件图号	名称	Part Name	数量	备注
No.	Part No.			Qty	Remark
21	190003989290	碗形堵塞	Plug	1	
22	WG2297Y4835	铭牌	Name plate	1	
23	190003904529	标牌铆钉--铆钉GB827-86	Rivet	2	
24	WG9112330016	销	Pin	1	
25	WG9231330809	销	Pin	1	

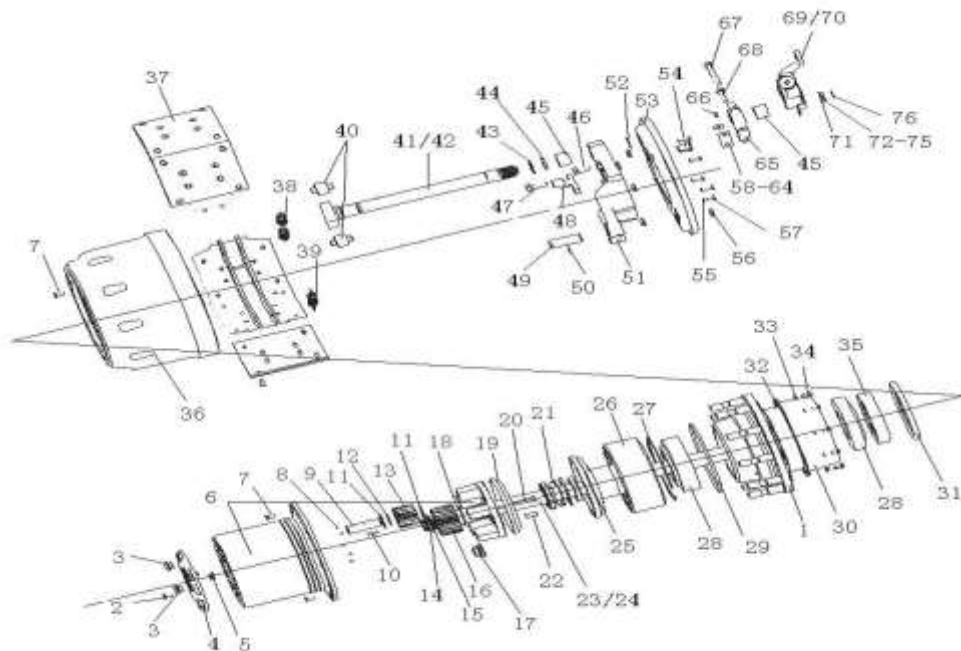
4.05 三段式铸造后桥壳(QT)(1850,断开式) /Rear Axle Housing



4.05 三段式铸造后桥壳(QT)(1850,断开式) /Rear Axle Housing

序号 No.	零部件图号 Part No.	名称	Part Name	数量 Qty	备注 Remark
1	AZ9231330948	三段式铸造后桥壳总成 (QT) (1850, 断开式)	Rear axle housing ass.	1	
2	WG9231330105	通气塞	Breather	1	
3	WG9231330106	橡胶软管	Hose	1	
4	WG9231340943	气室支架 (后桥)	Bracket	1	
5	ZQ151B2045TF2	六角头螺栓M20*1.5*45	Hexagon head bolts M20*1	7	
6	Q33208	2型全金属六角锁紧螺母	Nut	1	
7	Q40108	平垫圈	Washer	1	
8	WG61000060084	间隔衬套	Bushing	1	
9	Q1200850F3	双头螺柱	Stud	1	
10	WG81500010163	螺塞	Plug	1	
11	WG9014330125	操纵杆总成	Lever assembly	1	
12	1680M 320015	O型垫圈	O-ring	1	
13	Q43705	轴用钢丝挡圈	Circlip	1	
14	WG9231330808	销	Pin	1	

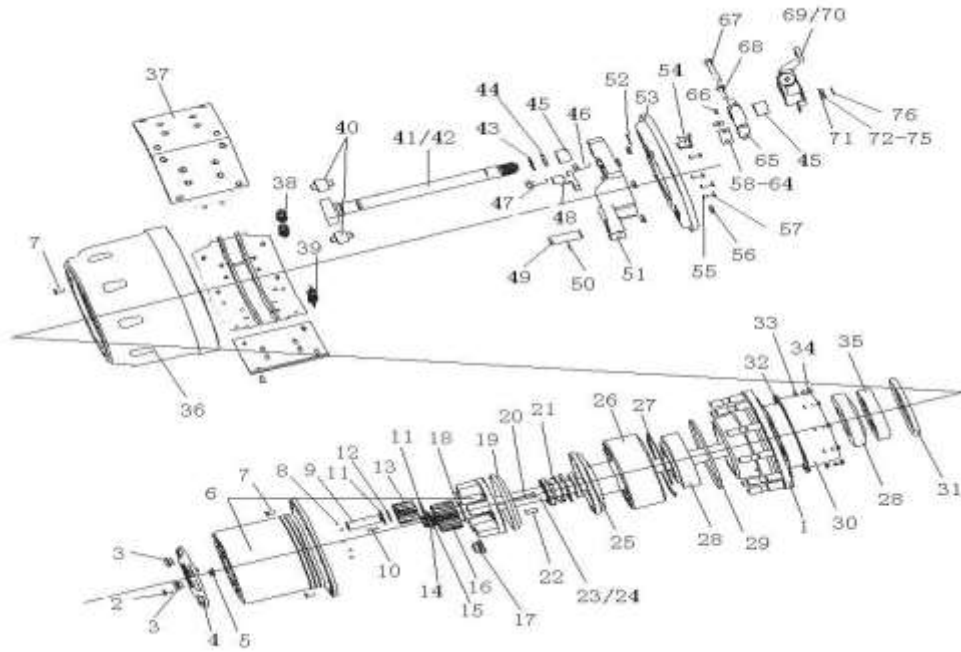
4.06 三段式铸造后桥轮毂及制动器/Hub and Brake of Driving Axle



4.06 三段式铸造后桥轮毂及制动器/Hub and Brake of Driving Axle

序号 No.	零部件图号 Part No.	名称	Part Name	数量 Qty	备注 Remark
1	AZ9231340310	后轮毂总成	Rear wheel hub assembly	2	
1,1	WG9231340309	后轮毂	Rear wheel hub	1	
1,2	WG9112340123	车轮螺栓(后)	Wheel bolt	10	
2	ZQ150B1018	六角头螺栓	bolt	20	
3	WG9231340002	圆柱头内六角螺塞总成	Plug	4	
4	WG9231340001	端盖	Cover	2	
5	WG9012340011	端盖顶销	Pin	2	
6	WG9231340329	行星架总成	Planetary gear frame assem	2	
7	Q2541025	十字槽沉头螺钉	Screw	8	
8	190003330148	钢球--8.0000 G200 b-G	Ball	10	
9	WG9012340004	行星轮轴	Shaft	10	
11	WG9012340075	行星轮垫片	Shim	20	
12	WG9012340077	垫圈	Washer	10	
13	WG9012340122	行星轮(Z=16)	Gear	10	
14	190003933351	轴用弹性挡圈	Circlip	2	
15	WG880 410097	垫圈	Washer	2	
16	WG9012340005	太阳轮(Z=23)	Gear	2	
17	WG9003884160	车轮螺母	Wheel bolt	20	
18	WG9012340076	太阳轮垫圈	Washer	2	
19	WG880420027	行星架挡油盘	Oil shield	2	

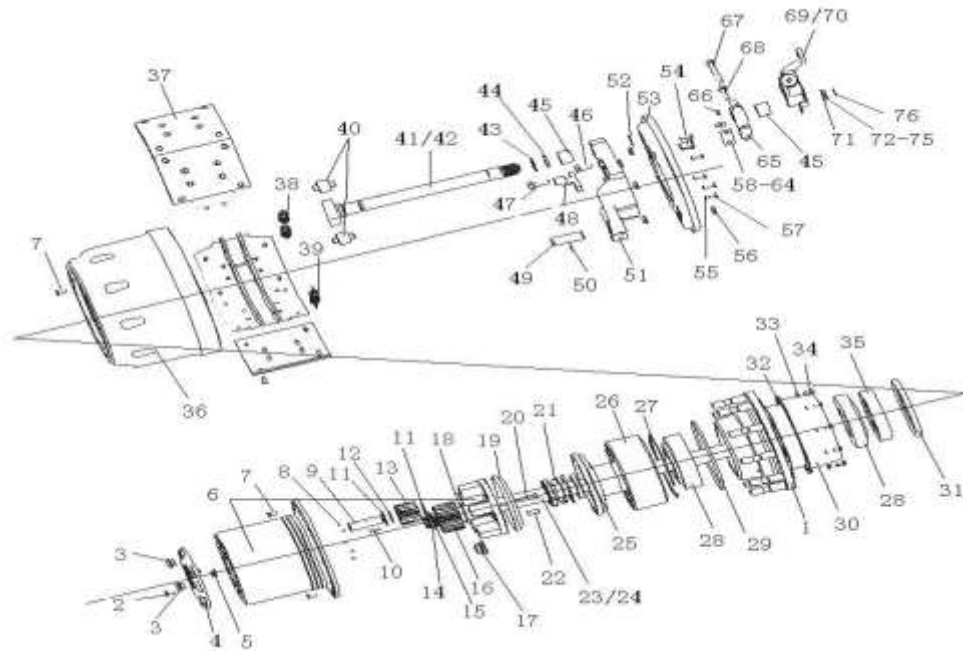
4.06 三段式铸造后桥轮毂及制动器/Hub and Brake of Driving Axle



4.06 三段式铸造后桥轮毂及制动器/Hub and Brake of Driving Axle

序号	零部件图号	名称	Part Name	数量	备注
No.	Part No.			Qty	Remark
20	Q151C1295TF2	六角头螺栓	Bolt	10	
21	WG9231340016	锁止垫片	Shim	2	
22	190003901704	园柱销	Pin	10	
23	WG9231340223	半轴(左)	Axle shaft	1	
24	WG9231340224	半轴(右)	Axle shaft	1	
25	WG9112340021	齿圈支架总成	Bracket assembly	2	
26	WG9012340121	内齿圈(Z=57)	Ring gear	2	
27	WG880420014	轴用挡圈	Circlip	2	
28	WG9981032222	圆锥滚子轴承32222	Tapered roller bearing	4	
29	WG9012340029	密封圈	Gasket	4	
30	WG9231340921	挡油罩	Oil shield	2	
31	WG9981340213	轴密封圈	Gasket	2	
32	WG9012340020	密封垫片	Gasket	2	
33	Q40308	弹簧垫圈	Spring washer	20	
34	ZQ150B0816	六角头螺栓M8	Hexagon head bolts	20	
35	WG9231340317	隔圈	Spacer	2	
36	WG9231342006	后制动鼓	Brake drum	2	
37	AZ9231342072	制动蹄带衬片总成	Brake shoe & lining assembl	4	
37,1	WG9231342071	制动蹄	Brake shoe	1	
37,2	WG9231342069	提升型制动摩擦片	Brake lining	2	

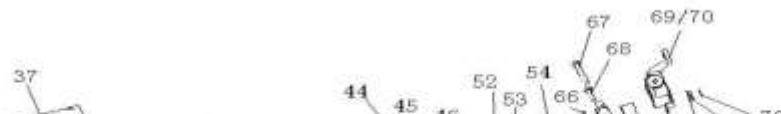
4.06 三段式铸造后桥轮毂及制动器/Hub and Brake of Driving Axle

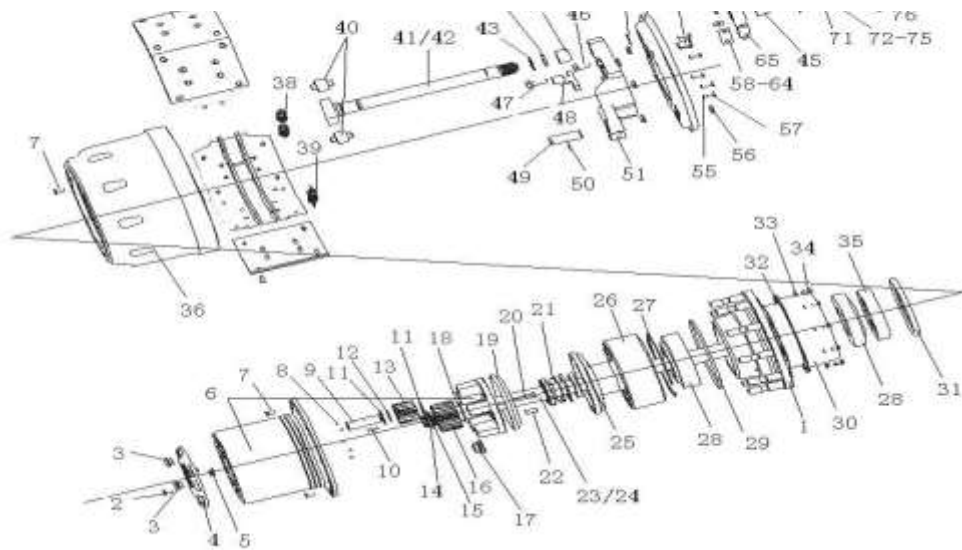


4.06 三段式铸造后桥轮毂及制动器/Hub and Brake of Driving Axle

序号 No.	零部件图号 Part No.	名称	Part Name	数量 Qty	备注 Remark
37,3	WG9231340068	铆钉	Rivet	28	
38	WG9981341006	回位弹簧	Spring	2	
39	WG9112340049	回位弹簧	Spring	4	
40	WG9000340027	滚轮	Roller	4	
41	WG9231340226	制动凸轮轴(左)	Brake camshaft	1	
42	WG9231340227	制动凸轮轴(右)	Brake camshaft	1	
43	WG880440010	附加垫片	Shim	4	
44	WG880340023	O形密封圈	O-ring	2	
45	WG9100340017	复合衬套	Bushing	4	
46	ZQ151B1635TF2	六角头螺栓M16*1.5*35	Hexagon head bolts	16	
47	ZQ151B1645TF2	六角头螺栓M16*1.5	Hexagon head bolts	4	
48	WG9231340957	ABS传感器支架	Bracket of ABS Sensor	2	
49	199000340064	支销	Pin	4	
50	Q5280624	弹性园柱销	Pin	4	
51	WG9231340560	制动底板	Brake plate	2	
52	190003933300	轴用弹性挡圈	Circlip	2	
53	WG9231342008	制动器防尘罩	Dust shield	2	
54	WG9112340010	ABS传感器输出保护套	Sleeve	2	
55	Q40308	弹簧垫圈	Spring washer	12	
56	WG880340037	密封圈	Gasket	8	

4.06 三段式铸造后桥轮毂及制动器/Hub and Brake of Driving Axle

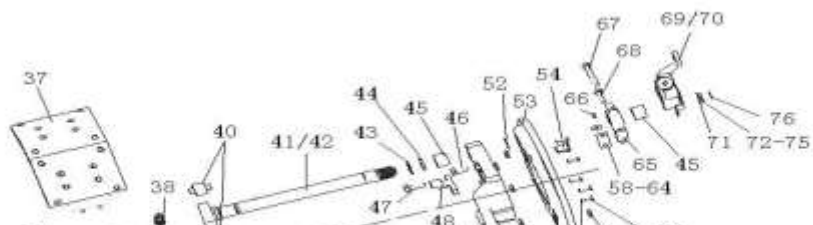


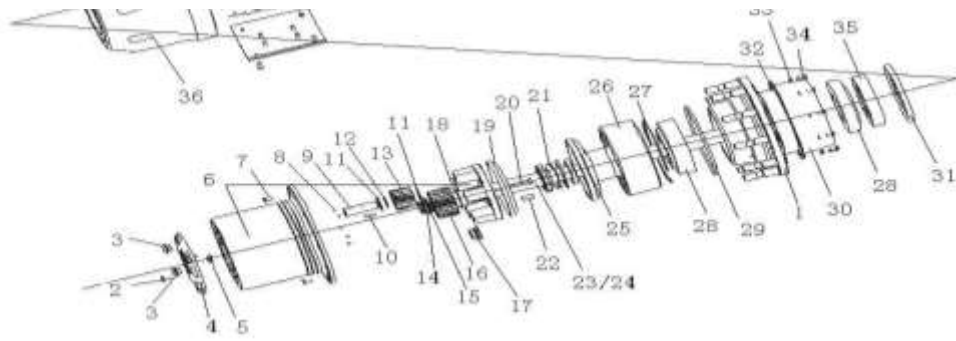


4.06 三段式铸造后桥轮毂及制动器/Hub and Brake of Driving Axle

序号 No.	零部件图号 Part No.	名称	Part Name	数量 Qty	备注 Remark
57	ZQ150B0816	六角头螺栓M8	Hexagon head bolts	12	
58	WG880340031	调整垫片(厚0.1)	Shim	1	
59	WG880340032	调整垫片(厚0.15)	Shim	1	
60	WG880340033	调整垫片(厚0.4)	Shim	1	
61	WG880340034	调整垫片(厚1.0)	Shim	1	
62	WG3809470031	调整垫片	Shim	1	
63	WG3809470032	调整垫片	Shim	1	
64	WG3809470033	调整垫片	Shim	1	
65	199014340041	凸轮轴支架	Bracket	2	
66	AZ9003963030	滑脂嘴总成 (AM8*1 D71)	Grease nipple	2	
66,1	190003963112	米制锥螺纹滑脂嘴	Grease nipple	1	
66,2	AZ9003963010	滑脂嘴帽	Cap	1	
67	ZQ151B1490	六角头螺栓M14*1.5	Hexagon head bolts	2	
68	ZQ151B1445	六角头螺栓M14*1.5	Hexagon head bolts	2	
69	WG9100340056	间隙调节臂总成(左)	Slack adjuster assembly	1	
70	WG9100340057	间隙调节臂总成(右)	Slack adjuster assembly	1	
71	WG880340022	垫圈	Washer	2	
72	WG80 320028	调整垫圈	Washer	1	
73	WG80 320029	调整垫圈	Washer	1	
74	WG80 320030	调整垫圈	Washer	1	

4.06 三段式铸造后桥轮毂及制动器/Hub and Brake of Driving Axle

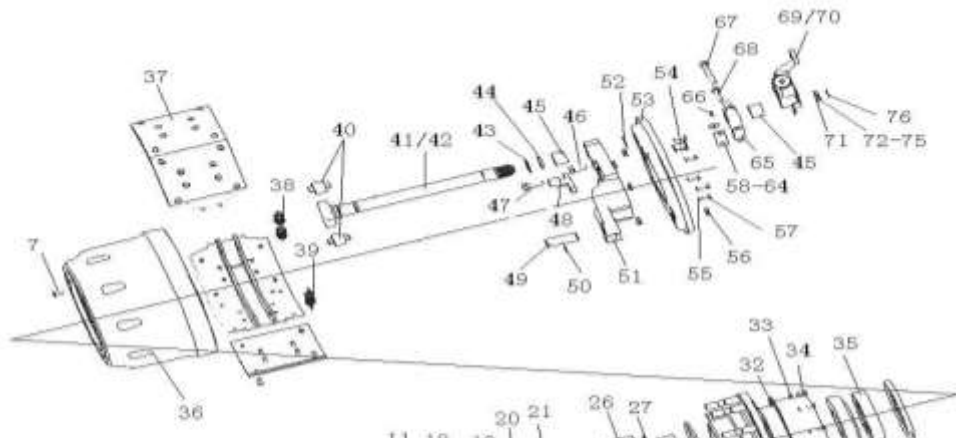


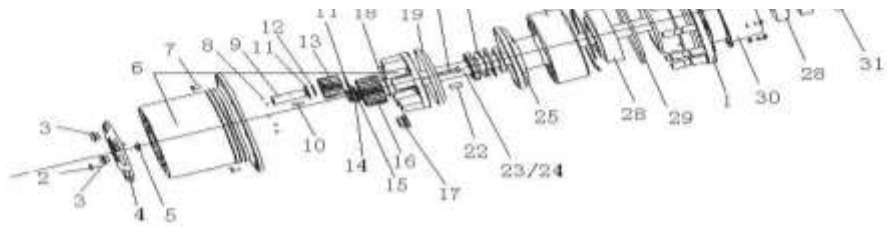


4.07 三段式铸造后桥轮毂及制动器(ABS)/Hub and Brake of Driving Axle(ABS)

序号 No.	零部件图号 Part No.	名称	Part Name	数量 Qty	备注 Remark
1	AZ9231340311	后轮毂总成 (ABS)	Rear wheel hub assembly	2	
1.1	AZ9231340310	后轮毂总成	Rear wheel hub assembly	1	
1.1.1	WG9231340309	后轮毂	Rear wheel hub	1	
1.1.2	WG9112340123	车轮螺栓(后)	Wheel bolt	10	
1.2	WG9231340908	ABS齿圈	Gear ring	1	
2	ZQ150B1018	六角头螺栓	Bolt	20	
3	WG9231340002	圆柱头内六角螺塞总成	Plug	4	
4	WG9231340001	端盖	Cover	2	
5	WG9012340011	端盖顶销	Pin	2	
6	AZ9231340329	行星架总成	Planetary gear frame assem	2	
7	Q2541025	十字槽沉头螺钉	Screw	8	
8	190003330148	钢球--8.0000 G200 b-G	Ball	10	
9	WG9012340004	行星轮轴	Shaft	10	
11	WG9012340075	行星轮垫片	Shim	20	
12	WG9012340077	垫圈	Washer	10	
13	WG9012340122	行星轮 (Z=16)	Gear	10	
14	190003933351	轴用弹性挡圈	Circlip	2	
15	WG880 410097	垫圈	Washer	2	
16	WG9012340005	太阳轮 (Z=23)	Gear	2	
17	WG9003884160	车轮螺母	Wheel bolt	20	

4.07 三段式铸造后桥轮毂及制动器(ABS)/Hub and Brake of Driving Axle(ABS)

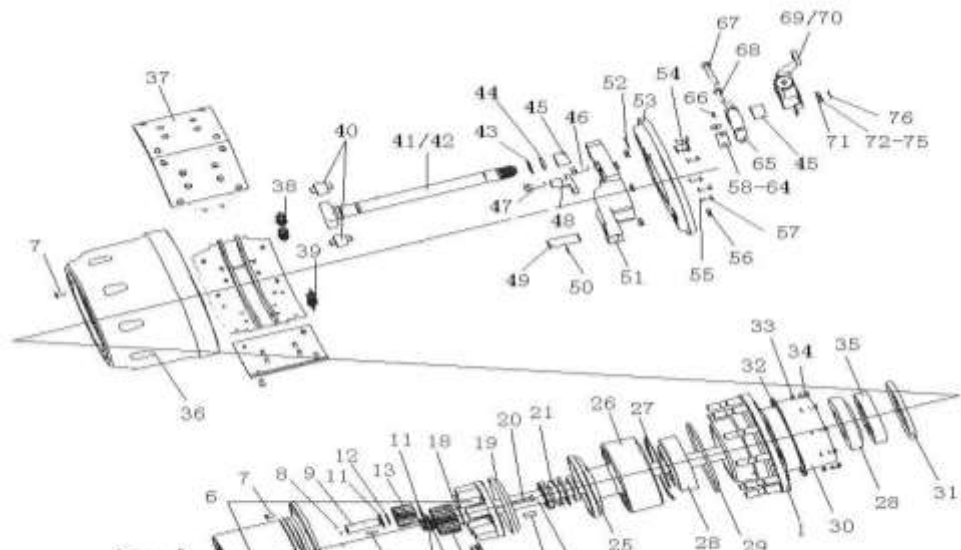




4.07 三段式铸造后桥轮毂及制动器(ABS)/Hub and Brake of Driving Axle(ABS)

序号 No.	零部件图号 Part No.	名称	Part Name	数量 Qty	备注 Remark
18	WG9012340076	太阳轮垫圈	Washer	2	
19	WG880420027	行星架挡油盘	Oil shield	2	
20	Q151C1295TF2	六角头螺栓	Bolt	10	
21	WG9231340016	锁止垫片	Shim	2	
22	190003901704	园柱销	Pin	10	
23	WG9231340223	半轴(左)	Axle shaft	1	
24	WG9231340224	半轴(右)	Axle shaft	1	
25	WG9112340021	齿圈支架总成	Bracket assembly	2	
26	WG9012340121	内齿圈(Z=57)	Ring gear	2	
27	WG880420014	轴用挡圈	Circlip	2	
28	WG9981032222	圆锥滚子轴承32222	Tapered roller bearing	4	
29	WG9012340029	密封圈	Gasket	4	
30	WG9231340921	挡油罩	Oil shield	2	
31	WG9981340213	轴密封圈	Gasket	2	
32	WG9012340020	密封垫片	Gasket	2	
33	Q40308	弹簧垫圈	Spring washer	20	
34	Q150B0816	六角头螺栓	Bolt	20	
35	WG9231340317	隔圈	Spacer	2	
36	WG9231342006	后制动鼓	Brake drum	2	
37	AZ9231342072	制动蹄带衬片总成	Brake shoe & lining assembl	4	

4.07 三段式铸造后桥轮毂及制动器(ABS)/Hub and Brake of Driving Axle(ABS)

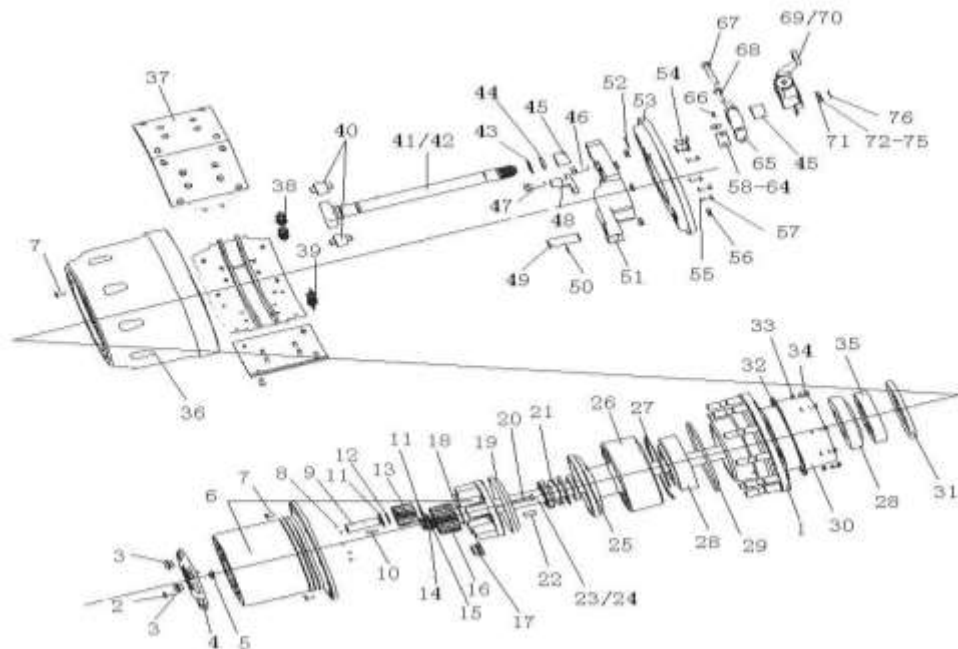




4.07 三段式铸造后桥轮毂及制动器 (ABS)/Hub and Brake of Driving Axle (ABS)

序号 No.	零部件图号 Part No.	名称	Part Name	数量 Qty	备注 Remark
37,1	WG9231342071	制动蹄	Brake shoe	1	
37,2	WG9231342069	提升型制动摩擦片	Brake lining	2	
37,3	WG9231340068	铆钉	Rivet	28	
38	WG9981341006	回位弹簧	Spring	2	
39	WG9112340049	回位弹簧	Spring	4	
40	WG9000340027	滚轮	Roller	4	
41	WG9231340226	制动凸轮轴(左)	Brake camshaft	1	
42	WG9231340227	制动凸轮轴(右)	Brake camshaft	1	
43	WG880440010	附加垫片	Shim	4	
44	WG880340023	O形密封圈	O-ring	2	
45	WG9100340017	复合衬套	Bushing	4	
46	Q151B1635TF2	六角头螺栓	Bolt	16	
47	Q151B1645TF2	六角头螺栓	Bolt	4	
48	WG9231340957	ABS传感器支架	Bracket	2	
49	199000340064	支销	Pin	4	
50	Q5280624	弹性园柱销	Pin	4	
51	WG9231340560	制动底板	Brake plate	2	
52	190003933300	轴用弹性挡圈	Circlip	2	
53	WG9231342008	制动器防尘罩	Dust shield	2	
54	WG9112340010	ABS传感器输出保护套	Sleeve	2	

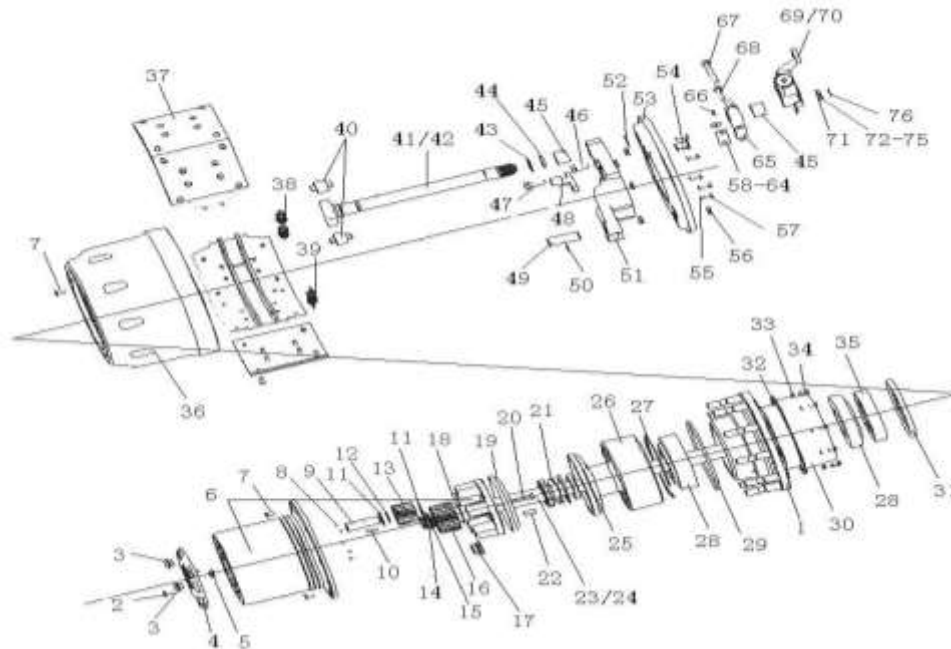
4.07 三段式铸造后桥轮毂及制动器 (ABS)/Hub and Brake of Driving Axle (ABS)



4.07 三段式铸造后桥轮毂及制动器 (ABS)/Hub and Brake of Driving Axle (ABS)

序号	零部件图号	名称	Part Name	数量	备注
No.	Part No.			Qty	Remark
55	Q40308	弹簧垫圈	Spring washer	12	
56	WG880340037	密封圈	Gasket	8	
57	Q150B0816	六角头螺栓	Bolt	12	
58	WG880340031	调整垫片(厚0.1)	Shim	1	
59	WG880340032	调整垫片(厚0.15)	Shim	1	
60	WG880340033	调整垫片(厚0.4)	Shim	1	
61	WG880340034	调整垫片(厚1.0)	Shim	1	
62	WG3809470031	调整垫片	Shim	1	
63	WG3809470032	调整垫片	Shim	1	
64	WG3809470033	调整垫片	Shim	1	
65	199014340041	凸轮轴支架	Bracket	2	
66	AZ9003963030	滑脂嘴总成 (AM8*1 D71)	Grease nipple	2	
66.1	190003963112	米制锥螺纹滑脂嘴	Grease nipple	1	
66.2	AZ9003963010	滑脂嘴帽	Cap	1	
67	ZQ151B1490	六角头螺栓	Bolt	2	
68	ZQ151B1445	六角头螺栓	Bolt	2	
69	WG9100340056	间隙调节臂总成 (左)	Slack adjuster assembly	1	
70	WG9100340057	间隙调节臂总成 (右)	Slack adjuster assembly	1	
71	WG880340022	垫圈	Washer	2	
72	WG80 320028	调整垫圈	Washer	1	

4.07 三段式铸造后桥轮毂及制动器 (ABS)/Hub and Brake of Driving Axle (ABS)



4.07 三段式铸造后桥轮毂及制动器 (ABS)/Hub and Brake of Driving Axle (ABS)

序号	零部件图号	名称	Part Name	数量	备注
----	-------	----	-----------	----	----

